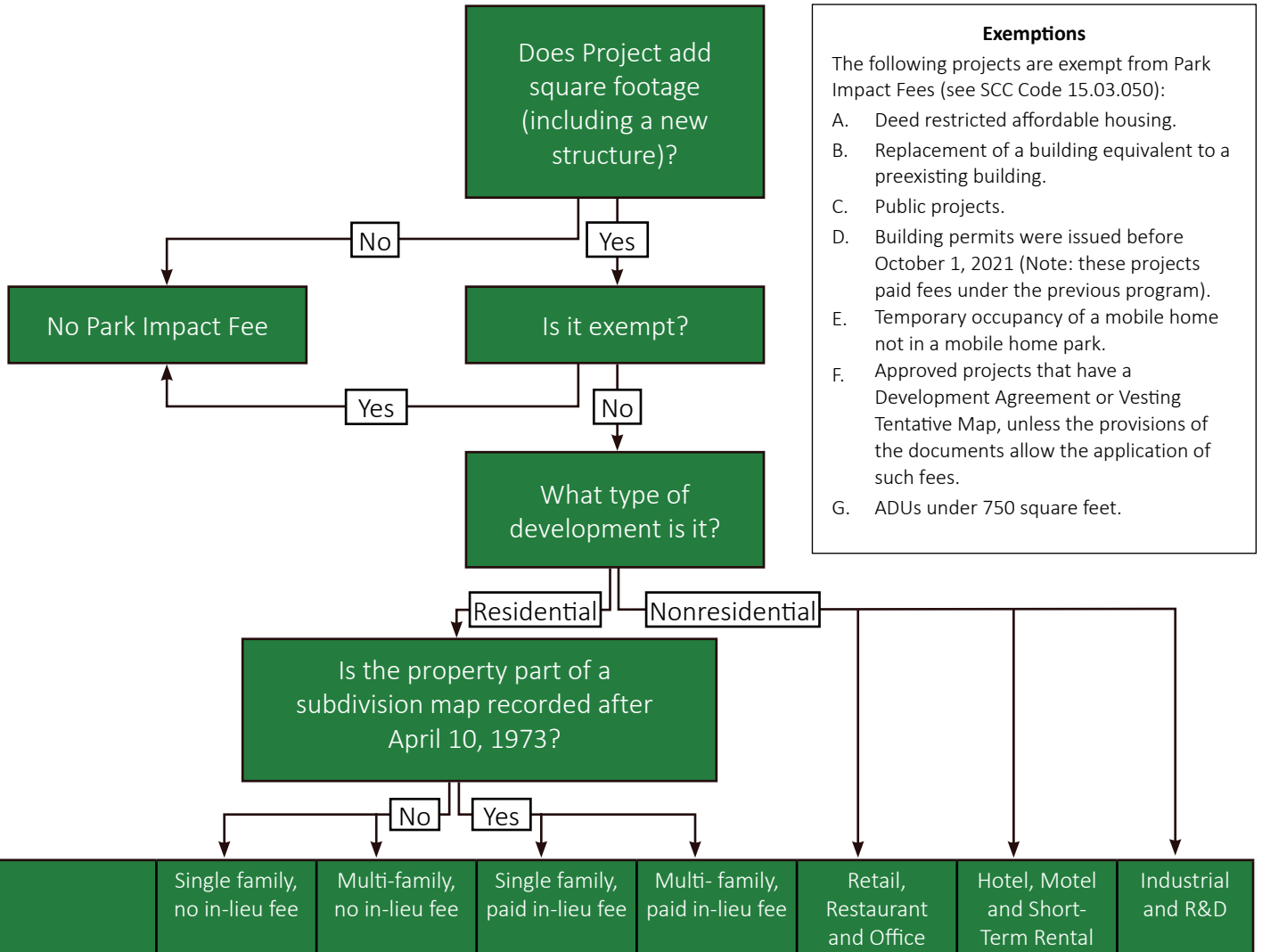


PARK IMPACT FEES Building Permit Flow Chart

(Subdivisions/Parkland Dedication In-Lieu Fees Have Separate Process)

UPDATED 07/01/2025



Exemptions

The following projects are exempt from Park Impact Fees (see SCC Code 15.03.050):

- A. Deed restricted affordable housing.
- B. Replacement of a building equivalent to a preexisting building.
- C. Public projects.
- D. Building permits were issued before October 1, 2021 (Note: these projects paid fees under the previous program).
- E. Temporary occupancy of a mobile home not in a mobile home park.
- F. Approved projects that have a Development Agreement or Vesting Tentative Map, unless the provisions of the documents allow the application of such fees.
- G. ADUs under 750 square feet.

Fee Rate (per new sq ft)							
AS OF JULY 1, 2025. FEES ARE UPDATED ANNUALLY.							
	\$7.45	\$5.59	\$0.91	\$0.69	\$7.29	\$8.71	\$3.40

For Internal Use: INFOR FEE CODE (by location)							
See GISWeb: Legend-> Special Districts-> Recreation District							
Unincorporated County	PU1	PU2	PU3	PU4	PU5	PU6	PU7
Boulder Creek Recreation and Park District	PB1	PB2	PB3	PB4	PB5	PB6	PB7
Alba Road Recreation District	PA1	PA2	PA3	PA4	PA5	PA6	PA7
La Selva Recreation District	PL1	PL2	PL3	PL4	PL5	PL6	PL7